

Featured Movie: T4 Pancreas Cancer

John C. Deutsch, MD
St. Mary's Duluth Clinic

EUS is often employed in the evaluation of suspected pancreas cancer. A tissue diagnosis can be made during EUS, and high resolution images can be obtained which can help in patient management.

Vascular anatomy is important when staging a pancreatic tumor. According to the AJCC Cancer Staging Handbook (1), a T4 lesion, which is an unresectable presentation, occurs when the celiac or superior mesenteric arteries are involved by the cancer.

This issues featured movie shows an example of a pancreas tumor that was locally advanced at presentation. The common bile duct was obstructed and the superior mesenteric vein has apparent lateral involvement for about a centimeter. More problematic was the finding of tumor infiltration into the superior mesenteric artery (SMA).

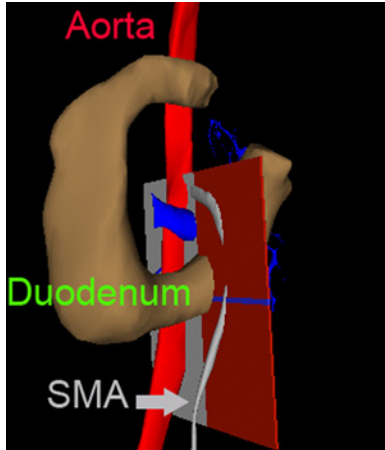


Figure 1: Visible human model with plane through the aorta and superior mesenteric artery.

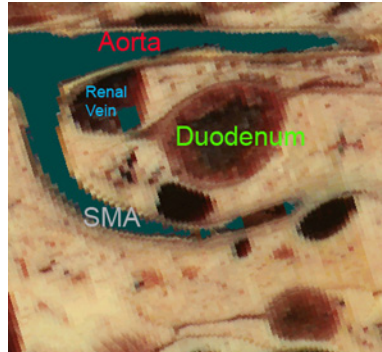


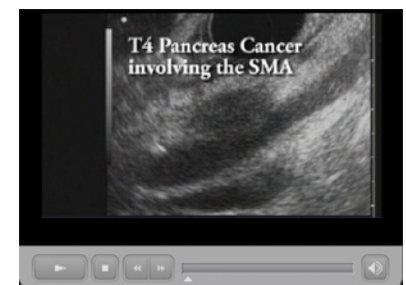
Figure 2: The anatomy contained within the plane in figure 1.



Figure 3: Radial array EUS image showing tumor on superior mesenteric artery with anatomy similar to what is shown in figure 2.

References:

1. AJCC Cancer Staging Handbook, 6th Edition Greene, FL, Page, DL, Fleming, ID, Fritz, AG, Balch, CM, Haller, DG and Morrow, M, editors. Springer Verlag 2002, New York, NY



Video Clip 1: Visible Human and radial array EUS of the region surrounding the distal duodenum.